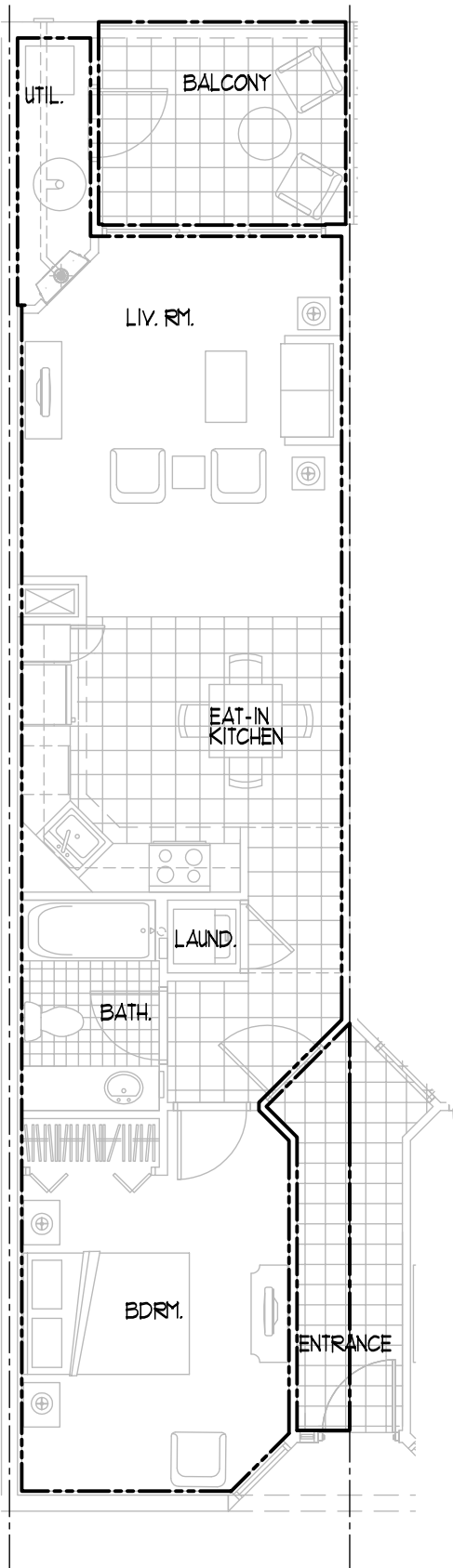


Waterside Towers | Unit A – Studio



KEY	
— · — · — ·	A/C AREA
— — — —	NON A/C

Unit A – Studio Unit
A/C Area S.F. 661

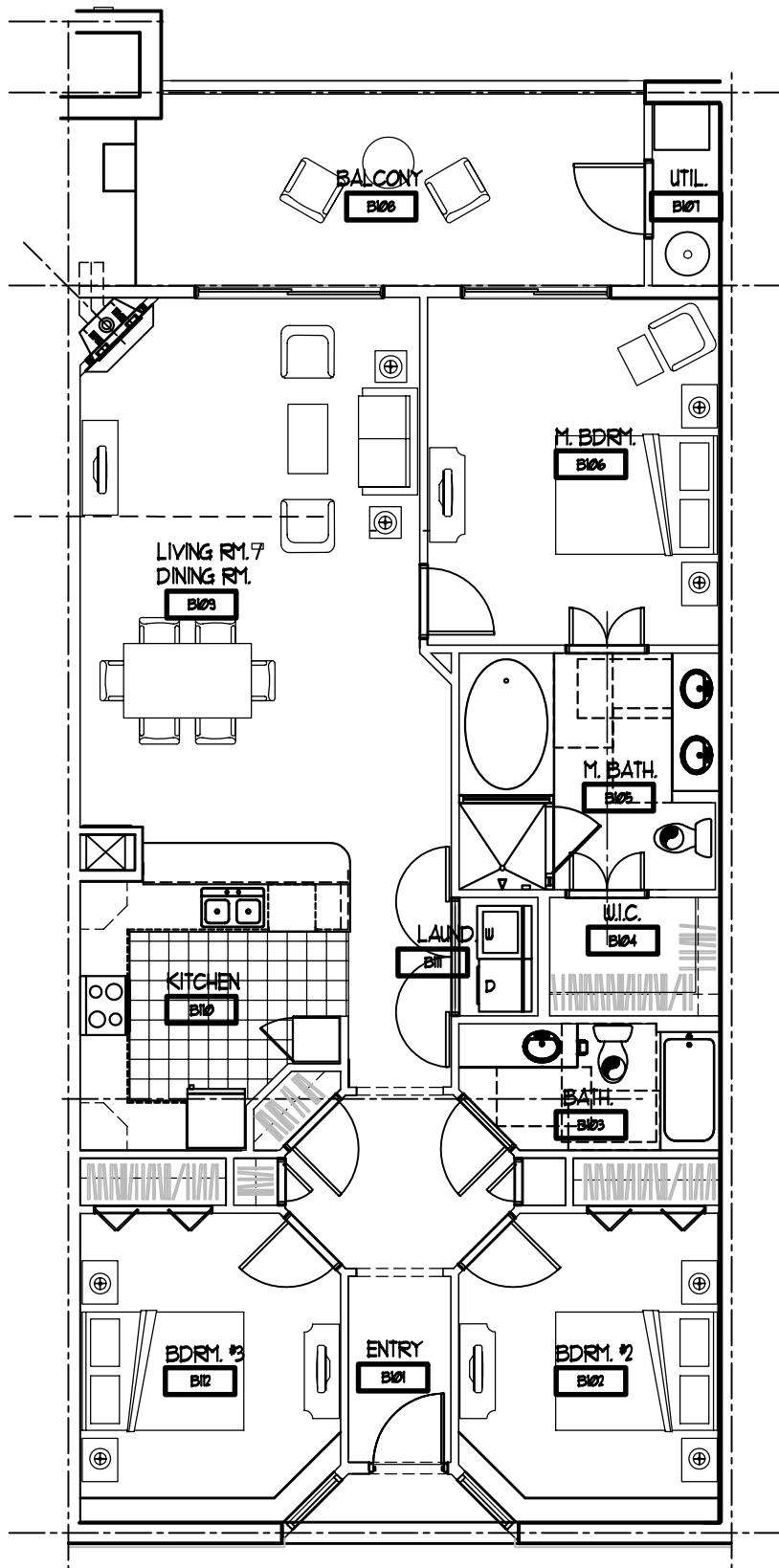
Non A/C Area
Balcony 85
Entrance 18

Total S.F. 764

Note: Indicated areas are derived from design configuration and subject to variation in as-built condition.

Waterside Towers

Unit B – 3 Bedroom



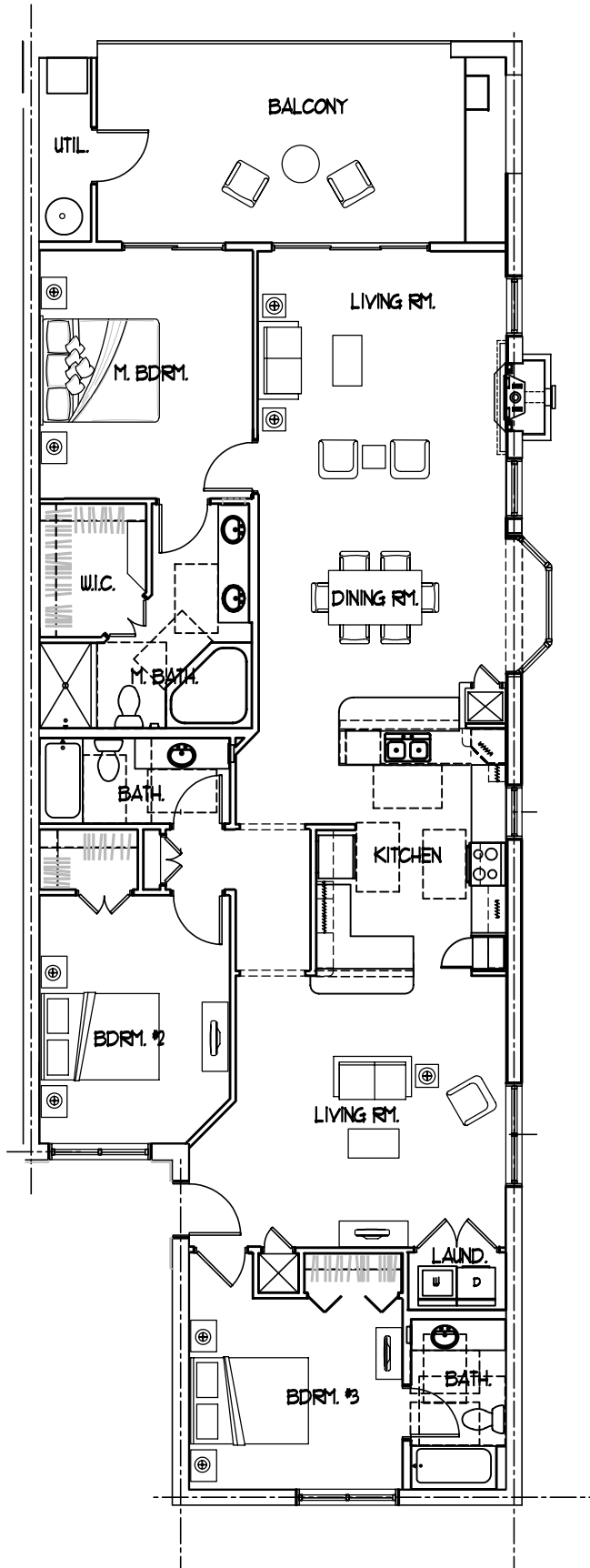
KEY	
	A/C AREA
	NON A/C

Unit B – 3-Bedroom Unit
 A/C Area S.F. 1,402

Non A/C Area
 Balcony 198

Total S.F. 1,600

Note: Indicated areas are derived from design configuration and subject to variation in as-built condition.



KEY	
-----	A/C AREA
-----	NON A/C

Unit D-1 – 3-Bedroom Unit
 A/C Area S.F. 1,803

Non A/C Area
 Balcony 270

Total S.F. 2,073

Note: Indicated areas are derived from design configuration and subject to variation in as-built condition.